

Exercise from Prelude BWV 543 (JS Bach)

traversopractice.net, oct23

F# minor

Musical notation for the F# minor exercise, measures 1-6. The key signature has two sharps (F# and C#) and the time signature is 4/4. The notation consists of three staves of music. The first staff starts with a treble clef, a key signature of two sharps, and a 4/4 time signature. The music features a sequence of eighth and sixteenth notes, with some accidentals (sharps and naturals) indicating chromatic movement. The second and third staves continue the melodic line, with measure numbers 3 and 5 indicated at the beginning of each staff.

B minor

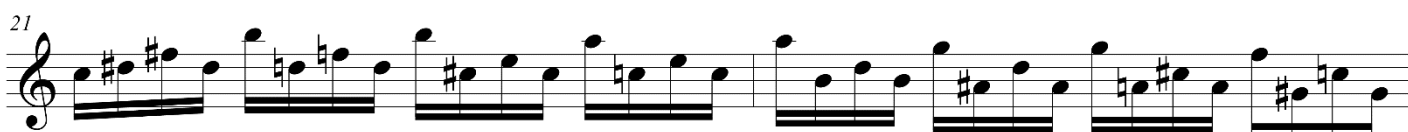
Musical notation for the B minor exercise, measures 7-12. The key signature has two sharps (F# and C#) and the time signature is 4/4. The notation consists of three staves of music. The first staff starts with a treble clef, a key signature of two sharps, and a 4/4 time signature. The music continues the sequence of eighth and sixteenth notes. The second and third staves continue the melodic line, with measure numbers 9 and 11 indicated at the beginning of each staff.

E minor

Musical notation for the E minor exercise, measures 13-18. The key signature has one sharp (F#) and the time signature is 4/4. The notation consists of three staves of music. The first staff starts with a treble clef, a key signature of one sharp, and a 4/4 time signature. The music continues the sequence of eighth and sixteenth notes. The second and third staves continue the melodic line, with measure numbers 15 and 17 indicated at the beginning of each staff.

from Prelude BWV 543 (JS Bach)

A minor



D minor



G minor



from Prelude BWV 543 (JS Bach)

C minor

37

39

41

The image shows a musical score for a warm-up routine in C minor, extracted from the Prelude BWV 543 by J.S. Bach. The score is written on three staves of music, each starting with a treble clef and a key signature of two flats (B-flat and E-flat). The first staff begins at measure 37, the second at measure 39, and the third at measure 41. The music consists of a continuous sequence of eighth and sixteenth notes, forming a complex, flowing pattern. The notation includes various accidentals (sharps, flats, and naturals) and rests, indicating a technically demanding piece. The piece concludes with a double bar line at the end of the third staff.