

Prelude on sixths (Corrette)

traversopractice.net, feb23

A major

Musical notation for the A major section, measures 1-6. The key signature is two sharps (F# and C#). The melody consists of eighth notes: A4, B4, C#5, B4, A4, G#4, F#4, E4, D4, C#4, B3, A3. Dynamics alternate between *f* and *p* for each note. A dashed slur covers the entire phrase. A diamond-shaped breath mark is placed under the final note (A3). A (+) symbol is above the final note.

F# minor

Musical notation for the F# minor section, measures 7-12. The key signature is two sharps (F# and C#). The melody consists of eighth notes: A3, G#3, F#3, E3, D3, C#3, B2, A2, G#2, F#2, E2, D2. A dashed slur covers the entire phrase.

D major

Musical notation for the D major section, measures 13-18 and 19-24. The key signature is two sharps (F# and C#). The melody consists of eighth notes: D4, E4, F#4, G4, A4, B4, C#5, B4, A4, G4, F#4, E4, D4, C#4, B3, A3. A dashed slur covers the entire phrase.

B minor

Musical notation for the B minor section, measures 25-30. The key signature is two sharps (F# and C#). The melody consists of eighth notes: B3, A3, G#3, F#3, E3, D3, C#3, B2, A2, G#2, F#2, E2, D2. A dashed slur covers the entire phrase.

G major

Musical notation for the G major section, measures 31-36. The key signature is one sharp (F#). The melody consists of eighth notes: G3, A3, B3, C#4, D4, E4, F#4, G4, A4, B4, C#5, B4, A4, G4, F#4, E4. A dashed slur covers the entire phrase.

E minor

Musical notation for the E minor section, measures 37-42. The key signature is one sharp (F#). The melody consists of eighth notes: E3, D3, C#3, B2, A2, G#2, F#2, E2, D2, C#2, B1, A1, G1. A dashed slur covers the entire phrase.

Prelude on sixths (Corrette)

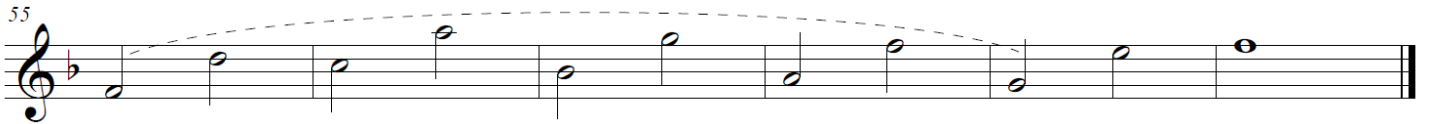
C major



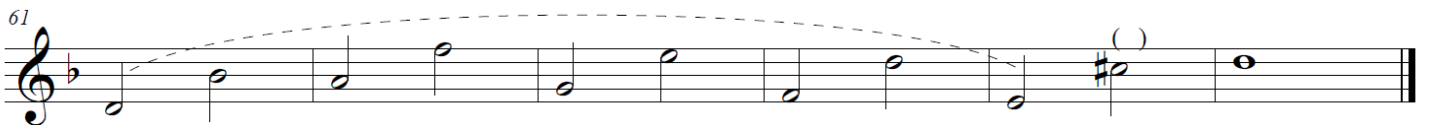
A minor



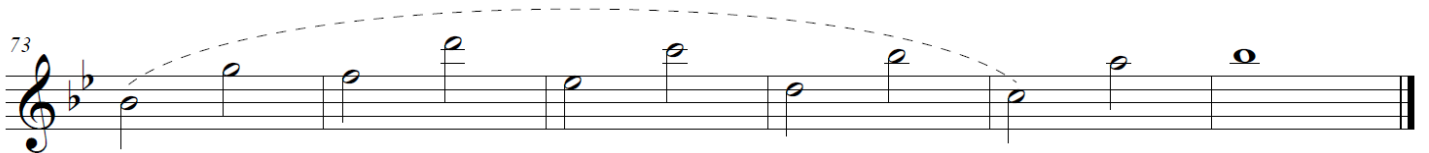
F major



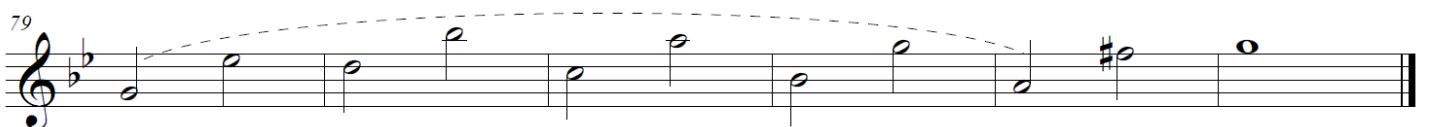
D minor



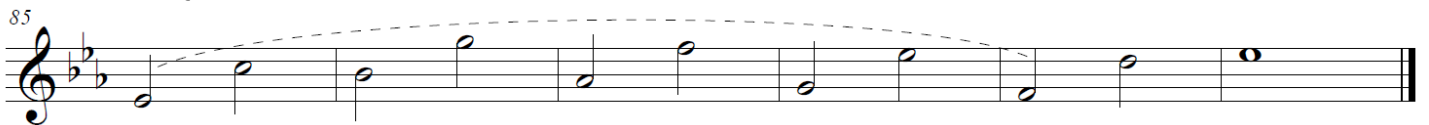
Bb major



G minor



Eb major



C minor

